



GEF-Satoyama Subgrantee Highlights Report

Organization Name:	GIF
Country:	Seychelles
Reporting Quarter:	FY19 Q2 (October to December 2018)
Person submitting Report:	Mariliana Leotta

<Highlight 1>: Indicator of Resilience Workshop

On the 12th of December 2018 GIF organized the second Indicator of Resilience workshop with fishers community and SFA to re-asses the previously scored indicators from 2016, with the aim of gaining a common understanding of the state of the seascape, identifying its strengths and threats from the perspective of the community and to monitor the resilience of both the seascape and its communities.

<Highlight 2>: Endorsement from Ministry of Fisheries and Agriculture

On the 13th of December 2018, GIF had a meeting with the Minister of Fishery and Agriculture, Hon. Charles Bastienne, and officers from the Ministry to present the results of one year of monitoring on artisanal fishery catch and to present as well the signed recommendations agreed on by the fishers during a series of discussions. The agreement consists of a list of measures on 13 species of fish (teleosts, shark and rays) that artisanal fishermen voluntarily agree to start implementing to make artisanal fishery more sustainable. These recommendations will be presented to the Seychelles Fishing Authority for formulation of the co-management plan, which is in line with the Fisheries Act of 2014 that promote co-management plans and also complements the Mahe Plateau Demersal Fishery Management plan. The Minister endorsed the measures brought forward by the fishers and proposed follow-up meetings for 2019.

<Highlight 3>: Meeting with Seychelles Fishing Authority

On the 18th of January 2019, GIF and fishers' representatives had a meeting with the Seychelles Fishing Authority (SFA) to present the results of the data collected on artisanal catch and present the measures, the fishers agreed on, to reduce the artisanal fishery impact on threatened fish species. After the presentations the press was invited to film the handover of the fishers' agreement to SFA. Project participants were interviewed to share their experience on the project and to talk about the importance of such measures for artisanal fisheries. The presentation ceremony was shown in the local news bulletins on the 18th 2019 on two television stations: Seychelles Broadcasting Corporation (SBS) and TéléSesel. SBS news are available on:

<http://media.sbc.sc/ftproot/Television/News/2019-01-18%20TV-1230PM-News.mp4>

<http://media.sbc.sc/ftproot/Television/News/2019-01-18-TV-8PM-News.mp4>

<http://media.sbc.sc/ftproot/Radio/News/2019-01-18%20AM-Radio-News-6PM-English.mp3>

<http://media.sbc.sc/ftproot/Radio/News/2019-01-18%20AM-Radio-News-7PM-Creole.mp3>

<http://media.sbc.sc/ftproot/Radio/News/2019-01-18%20AM-Radio-News-5PM-French.mp3>

<Highlight 4>: Fish ID Guide

GIF produced a threatened fish species identification guide to be distributed to fishers. The guide includes, for each threatened species, photos and description for identification, and fishery status based on the agreement signed by the fishers.

Photos



Photo 1a - Discussion by participants during the scoring process @GIF/M. Leotta



Photo 1b - Tally of scores and trends to determine consensus rating @GIF/M. Leotta



Photo 2 - Meeting with Ministry of Fisheries and Agriculture @GIF/M. Leotta



Photo 3 a: GIF GM, Wilna Accouche, handing over the fishers' declaration to the SFA CEO, Rony Renaud @GIF/M. Leotta

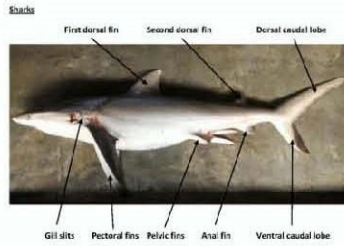
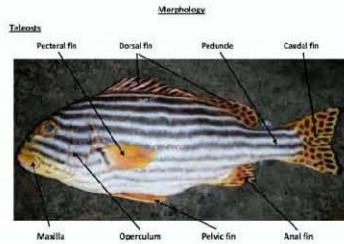


Photo 3b - GIF GM, Wilna Accouche, handing over the fishers' declaration to the SFA CEO, Rony Renaud @GIF/M. Leotta



Photo 3 c – Mr. Henrie Ballaron, fisher involved in the project, giving interview to Seychelles Broadcasting Corporation and TéléSesel @GIF/M. Leotta

Field Guide to the Threatened Species of the Seychelles Artisanal Fishery



Scientific Name *Cheilinus undulatus* (Fucpo), 1835

English: Humphead/Napoleon wrasse
Creole: Aya zera
French: Rapetor



IUCN Red List Status: Endangered (EN)

Description: This species is readily identifiable, it is the largest species in the wrasse family. It has remarkable coloration ranging from bright metallic blue-green (Photo A) to dull blue-green for males and red-orange to olive green for females (Photo B). The scale colouration gives a distinctive horizontal pattern to the flanks. Two black lines run anteriorly from the eyes. There is an intricate pattern of orange-brown lines and spots on the face. Adults exhibit a large prominent hump on the forehead and large fat lips. The caudal fin of juveniles has a prominent yellow margin.

Size: Max Length: 270 cm, Common length: 60 cm TL. Males are typically larger than females, with females rarely exceeding 100cm TL.

Fishery Status: Minimum catch size 60 cm TL

Scientific Name *Megaplon acutidens* (Ruppel, 1837)

English: Sharp-tooth lemon shark
Creole: Kaba roz
French: Requiem lemon fascifié



IUCN Red List Status: Vulnerable (VU)

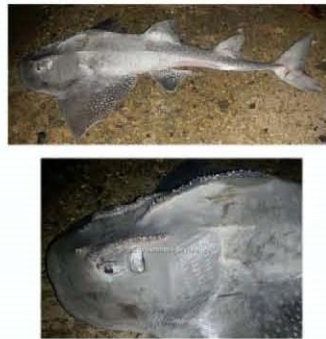
Description: Large, stocky yellowish to yellow-brown shark dorsally and whitish ventrally with broad blunt snout. Distinctive narrow pointed teeth emerging from a broad base. Eyes are small relative to head size with distinctive yellow coloration. First dorsal fin large and falcate with origin significantly anterior to first ray of pectoral fins. Second dorsal fin distinctly larger and not much smaller than first. No interdorsal ridge. Pectoral fins long broad and falcate with origin between the 3rd and 4th gill slits. Pelvic fins are large with concave trailing edge. Anal fin is large with trailing edge strongly recurved. Caudal fin is an large, the lower lobe quite pronounced.

Size: Maturity: both sexes mature at about 220-240 cm TL. Max. length: 310 cm TL (possibly to 380 cm).

Fishery Status: Minimum catch size 150 cm Total Length
Illegal to fish with gill nets.

Scientific Name *Rhina encylostoma* (Bloch & Schneider, 1801)

English: Lionmouth guitarfish
Creole: Uta/Anatouf
French: Anguilla



IUCN Red List Status: Vulnerable (VU)

Description: Unmistakable deep bodied guitarfish with a broad, blunt snout and distinctive heavy thorny nape over the eyes, above the "shoulders" are in a central dorsal ridge. Grey to sandy brown colour dorsally with white spots on fins, body and tail. Ventral surface is pale cream to white, large light white patch on the eye. The mouth has plates of crushing teeth. Tail considerably longer than disk, with large, sharp line dorsal fins and well-developed caudal fin.

Size: Maturity: Males mature 150-175 cm TL, females ~180 cm TL. Max Length: 270 cm TL.

Fishery Status: Release if caught.

Scientific Name *Aetomylax vespertilio* (Bleeker, 1852)

English: Verrate eagle ray
Creole: Lare d'ore
French:



IUCN Red List Status: Endangered (EN)

Description: Large eagle ray, grey dorsally, colour numerous transverse black lines anteriorly transitioning to rings posteriorly and continuing with barring or spotting effect on to tail. Head with several black spots and stripes. The tail has no spine. Ventral surface white. Size broad but short, length about half DW. Pectoral fins weakly falcate.

Size: Maturity: Males mature at approx 170 cm DW, female size at maturity unknown. Max. attains at least 300 cm DW, possibly 350 cm DW (up to 600 cm TL).

Fishery Status: Minimum catch size 100 cm Disc Width