



GEF-Satoyama Subgrantee Highlights Report

Organization Name:	UIS
Country:	Colombia
Reporting Quarter:	FY18 Q4 (April to June 2018)
Person submitting Report:	Björn Reu
<p><Highlight 1>: Dung beetles and ants sampling continue in 9 farms and 3 sites in the forest. Students continue sampling of insects. With the help of dichotomous keys and experts, the species previously collected are partially identified. 101 morphospecies of ants and 22 morphospecies of dung beetles have been reported.</p>	
<p><Highlight 2>: The bird, terrestrial vertebrates and plants biodiversity sampling has been completed. Students have completed the sampling of birds, terrestrial vertebrates and plants. The identification of the species and the analysis of the data are in process. The UAV has completed several flights and the students continue generated composite images and models of canopy that allow to estimate the structure and determinate vegetation indices.</p>	
<p><Highlight 3>: A workshop was held to socialize the results (Debriefing meeting) between the research team and the farmers participants in the project. During the workshop doubts and misunderstandings were clarified by the research team.</p>	
<p><Highlight 4>: The family: A matter of concern at Las Cruces Family problems appeared as an issue of concern mentioned by community members at the Resilience Indicators' Workshop. As a response, the research team organized a couple of workshop on the topic. The second one was conducted during this quarter, addressing ideals on family, typologies of families and gender roles.</p>	
<p><Highlight 5>: Ethnographic fieldwork. As part of the research team interest on recovering women's local knowledge ethnographic field work started in three farms. A group of three students visited the farms and learned about women's daily life in the study area. All aspects of women's day to day activities are documented, including house work, social life, and agriculture activities. Additional farms will be visited in the near future.</p>	

Photos

Please include a description of each photo, the name of the person the photo is credited to and the organization they are affiliated to.

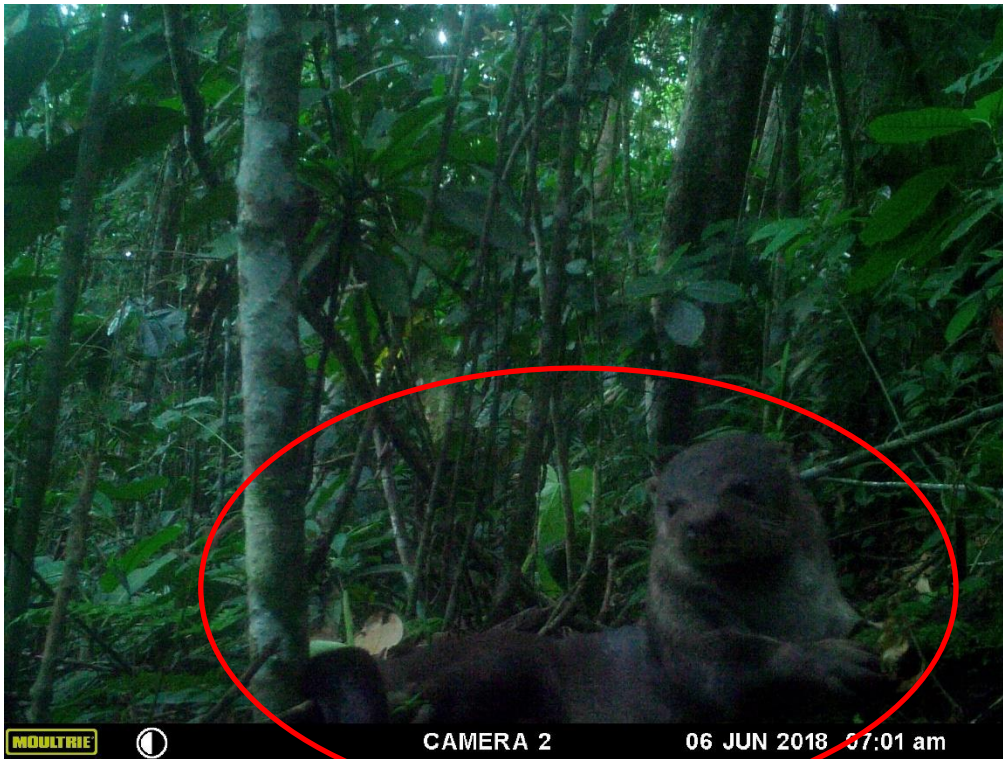


Picture H1a. Some morfospecies of formicidae, registered in coffee and cocoa plantations. Ants sampling by biology student, UIS ©Oscar Sanabria



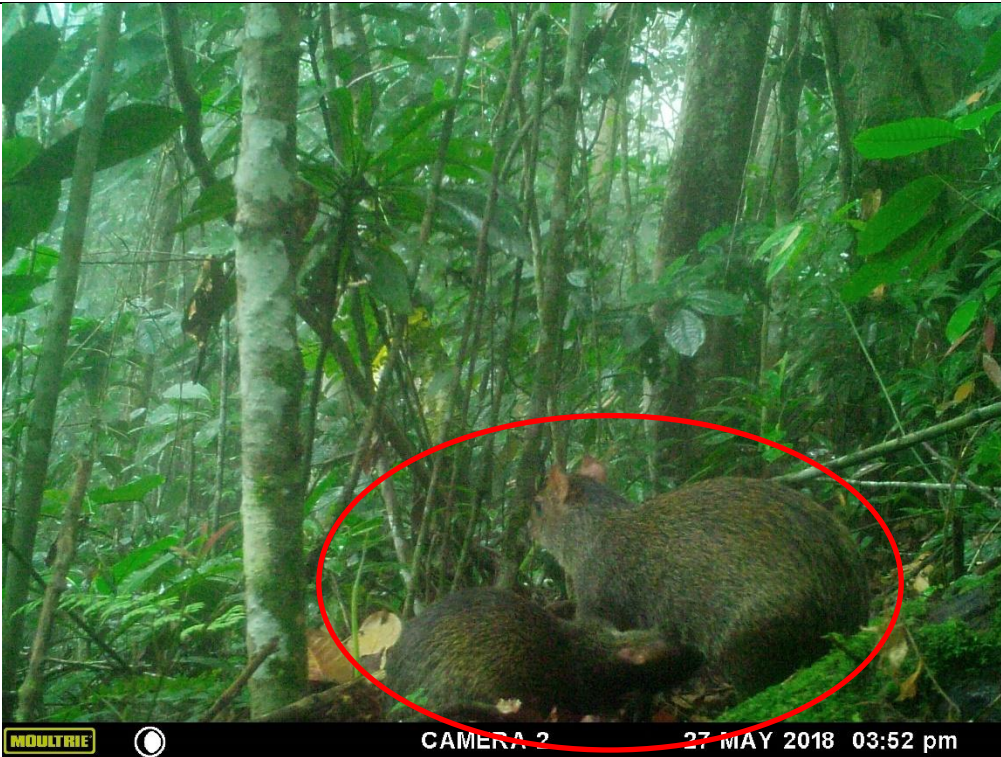
MOULTRIE  CAMERA 6 20 JAN 2018 09:02 am

Picture H2a. *Nasua Nasua*, registered in forest adjacent to coffee plantations. Terrestrial vertebrate sampling by biology student, UIS ©Luisa Fernanda Villaba Amaya



MOULTRIE  CAMERA 2 06 JUN 2018 07:01 am

Picture H2b. *Lontra longicauda*, registered in forest adjacent to coffee plantations. Terrestrial vertebrate sampling by biology student, UIS ©Luisa Fernanda Villaba Amaya



Picture H2c. *Dasyprocta punctata*, registered in forest adjacent to coffee plantations. Terrestrial vertebrate sampling by biology student, UIS ©Luisa Fernanda Villaba Amaya



Picture H2d. *Rupornis magnirostris*, registered in cocoa plantations. Terrestrial vertebrate sampling by biology student, UIS ©Luisa Fernanda Villaba Amaya



Picture H2e. *Galictis vittata*, registered in coffee plantations. Terrestrial vertebrate sampling by biology student, UIS
©Luisa Fernanda Villaba Amaya



Picture H2f. Canopy height model with polygons to calculate the area of the canopy for each tree. Image generated by biology student, UIS ©Mateo Jaimes



Picture H2g. Orthomosaic with cyan colored points where tree tops are identified by Forest Tools package in R. Image generated by biology student, UIS ©Mateo Jaimes



Picture H3. Debriefing meeting. ©Diego A. Zárate



Picture H4. Family workshop. Two students and community members reflect on issues related to types of families and gender roles within. © Angie Carolina Forero



Picture H5a. Recovering women's knowledge. A group of three students conducted ethnographic visits to three farms during this quarter. © Juan C. Aceros



Picture H5b. Recovering women's knowledge. Various data is reported in field diaries, including the plants women cultivate as well as their uses. © Juan C. Aceros

