

GEF Satoyama Project

Fishermen Baseline Interviews: ID Guide

2016



Filanbaz

S.N. *Bolbometopon muricatum*

E.N. Green humphead parrotfish



Distinguishing characteristics

Uniformly dark green with dark blue edges to operculum and fins. Prominent humped head with vertical profile anterior surface of which is pale green or pink. Listed as Vulnerable on the IUCN Red List.

2

Size

Up to 130cm TL. Largest parrotfish in the world.

Demwazel

S.N. *Galeocerdo cuvier*

E.N. Tiger shark



Distinguishing characteristics

A very large shark with robust forequarters and large broad, bluntly rounded snout. Grey dorsally with dark grey to black bars and spots on flanks and tail, white ventrally. Stripes and spots fade in adult and may be absent in large individuals. Listed as Near Threatened on the IUCN Red List. Strong evidence to suggest significant decline in population and occurrence of mature tiger sharks on Mahé Plateau.

30

Size

Up to 600 cm TL.

Aya Zerar

S.N. *Chelinus undulatus*

E.N. Humphead or Napoleon wrasse



Distinguishing characteristics

Body colour can be brownish through olive green to bright metallic blue-green. Colour mottled on body. Large fat lips. Two black lines running from eye posteriorly. Orange-brown to green diffuse line pattern on face. Caudal fin with prominent pale margin. The bottom photo shows a juvenile specimen (only 23cm TL). Listed as Endangered on the IUCN Red List Status.

3

Size

Up to 229cm TL – considerable variation but typically from 60-150cm TL.

Vyey Krab

S.N. *Epinephelus lanceolatus*

E.N. Giant grouper



Distinguishing characteristics

4

Very large, heavysset grouper, largest grouper in the world, dark olive-brown colouration, fins yellow with black spots fins becoming darker in larger individuals.
Listed as Vulnerable on the IUCN Red List.

Size

Up to 270cm, typically 190-200cm.

Marar

S.N. *Leptoscarus vaigiensis*

E.N. Marbled parrotfish



Distinguishing characteristics

29

Greenish colour with pale and dark brown scales providing marbled effect. Pale blue/green spots on head and base of caudal fin. Eye with yellow-orange iris and outer green ring.
Listed as Least Concern on the IUCN Red List but strong anecdotal evidence of a significant decline in population on Mahé Plateau.

Size

Up to 35cm TL.

Vyey galfa

S.N. *Aetheloperca rogae*

E.N. Redmouth grouper



Distinguishing characteristics

Full bodied dark brown to black grouper with bright red coloration to inside of mouth. Red band on pectoral fins and white bar on stomach in some specimens. Listed as Data Deficient on the IUCN Red List. Status on Mahé plateau unknown. Occasional component of artisanal catch.

28

Size

Up to 60cm TL.

Babonn (Babonn Zonn/Sesil)

S.N. *Plectropomus laevis*

E.N. Blacksaddled coral grouper



Distinguishing characteristics

Has two different and very distinctive colour phases (see Photos) The blacksaddled and blue spotted phases. The majority of, but not all, blacksaddled (yellow) specimens are immature females. Listed as Vulnerable on the IUCN Red List.

5

Size

Up to 125 cm TL, typically 80-90cm.

Zelron

S.N. *Carcharhinus plumbeus*

E.N. Sandbar shark



Distinguishing characteristics	Very large and anteriorly positioned first dorsal fin. Wide prominent interdorsal ridge. Sandy grey-brown colour dorsally Listed as Vulnerable on the IUCN Red List.
--------------------------------	---

Size	Born 55-75cm TL. Mature: 140-180cm TL, Maximum approx. 240cm TL (possibly to 300cm TL).
------	---

Babonn rouz

S.N. *Plectropomus punctatus*

E.N. Marbled coral grouper



Distinguishing characteristics	Large orange-red through to purple-brown grouper with mottled colouration dorsally. Trailing edges of fins typically blue. Listed as Data Deficient on the IUCN Red List. Anecdotal evidence however of a significant decline in population on Mahé Plateau.
--------------------------------	---

Size	Up to 96 cm TL.
------	-----------------

????

S.N. *Dermatolepis striolata*

E.N. Smooth grouper



Distinguishing characteristics

Full bodied grouper with very distinctive patterning. Brown to black base colour with cream coloured patches superimposed with smaller brown spots that may coalesce to form stripes.
Listed as Data Deficient on the IUCN Red List. Status on Mahé plateau unknown - very rare component in catch. Some evidence to suggest formerly much more common.

26

Size

Up to 85cm TL.

Ledan Deor

S.N. *Hemipristis elongata*

E.N. Snaggletooth Shark



Distinguishing characteristics

Hooked Lower teeth protrude from mouth. Prominent upper and lower Labial furrows. Strongly curved fins.
Listed as Vulnerable on the IUCN Red List.

7

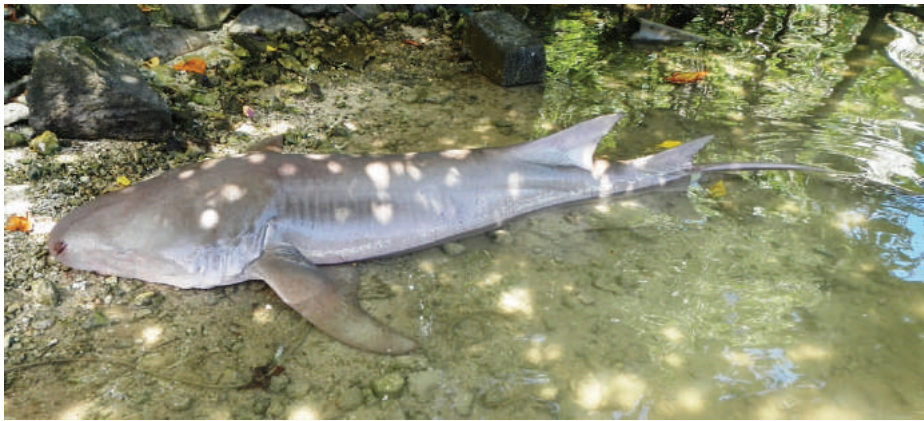
Size

Born 45-52cm TL, Maximum 230-240cm TL.

Landormi

S.N. *Nebrius ferrugineus*

E.N. Tawny nurse shark



Distinguishing characteristics	Posterior position of first dorsal fin, large second dorsal and upper caudal give distinctive profile. Long barbels on the mouth Rough skin. Tiny spiracle. Listed as Vulnerable on the IUCN Red List.
--------------------------------	--

Size	Born 40-60cm TL. Mature: approx. 250 cm, Maximum approx. 320 cm TL.
------	---

Tukula

S.N. *Epinephelus tukula*

E.N. Potato bass



Distinguishing characteristics	Large heavysset grouper grey to grey-brown colour with large evenly spaced dark blotches on flanks and dark spots on fins. Listed as Least Concern on the IUCN Red List. Substantive evidence however of a significant decline in population on Mahé Plateau to current rarity.
--------------------------------	--

Size	Up to 200 cm TL.
------	------------------

Vyey masata

S.N. *Epinephelus polyphekadion*

E.N. Camouflage grouper



Distinguishing characteristics

Pale brown heavy set grouper, covered with small dark brown spots with larger irregular dark blotches superimposed on these spots. Listed as Near Threatened on the IUCN Red List. Anecdotal evidence of significant decline in population on Mahé Plateau.

24

Size

Up to 90cm TL.

Kabo Roz

S.N. *Negaprion acutidens*

E.N. Sicklefim lemon shark



Distinguishing characteristics

Yellowish colouration (specimens kept on ice can turn a sandy brown colour). Large second dorsal fin. Long pointed teeth in both upper and lower jaws. Listed as Vulnerable on the IUCN Red List.

9

Size

Born 45-60cm TL. Mature: Male approx. 240 TL, Maximum approx. 310cm TL.

Marto rouz

S.N. *Sphyrna lewini*

E.N. Scalloped hammerhead shark



Distinguishing characteristics Front edge of head exhibits a central notch flanked on either side by two further notches giving the species its distinctive “scalloped” appearance.
Listed as Endangered on the IUCN Red List.

Size¹⁰ Born 42-55cm TL. Mature: male approx. 150-165 TL, female approx. 210 cm TL, Maximum: males 370cm TL, females 420cm TL.

Makonde bordaz

S.N. *Epinephelus polylepis*

E.N. Smallscaled grouper



Distinguishing characteristics Head, body and fins pale, covered with numerous small close-set dark brown spots; spots on fins and dorsal parts of head and body smaller and closer together compared to those on the sides and ventrally; rear edge of caudal fin with white line and a row of blackish brown spots.
Listed as Near threatened on the IUCN Red List. Status on Mahé Plateau unclear.

23

Size Up to 60 cm TL.

Vyey avril

S.N. *Epinephelus ongus*

E.N. White-streaked grouper



Distinguishing characteristics

A brown grouper with numerous smaller pale spots on head, body and fins that become elongate 'streaks' in larger fish, and a dark submarginal band on the dorsal, anal and caudal fins. The dark brown juveniles are covered in white spots.

Listed as Least Concern on the IUCN Red List but strong anecdotal evidence of a significant decline in population on Mahé Plateau.

22

Size

Up to 40cm TL.

Marto blan

S.N. *Sphyrna mokarran*

E.N. Great hammerhead



Distinguishing characteristics

Very high falcate first dorsal fin. Central notch at front of otherwise near rectangular cephalophoil (head). Pelvic fins have concave trailing edge.

Listed as Endangered on the IUCN Red List.

Size¹¹

Born 50-70cm TL. Mature: Male approx. 235-270cm TL, Female 250-300cm TL, Maximum > 600cm TL.

Marto ronn or Marto nwar

S.N. *Sphyrna zygaena*

E.N. Smooth hammerhead



Distinguishing characteristics

Dark olive to grey in colour dorsally and white ventrally. Cephalofoil has a broad slightly rounded anterior margin without central notch.
Listed as Vulnerable on the IUCN Red List.

Size¹²

Born 50-61 cm TL. Mature about 210-240cm TL, max length 400-500cm TL.

Vyey goni

S.N. *Epinephelus fuscoguttatus*

E.N. Brown marbled grouper



Distinguishing characteristics

Light brown to brown background colour (significant colour variation), small hexagonal spots on head and body becoming larger posteriorly. 5 vertical series of irregular dark brown blotches. Brown spots, on dark blotches much darker than spots in-between blotches, small black saddle spot on rear half of caudal peduncle.

21

Listed as Near Threatened on the IUCN Red List. Anecdotal evidence of significant decline in population on Mahe Plateau.

Size

Up to 120cm, typically 50-60cm.

Additional species of interest

Gitar or Pantouf

S.N. *Rhina ancylostoma*

E.N. Bowmouth guitarfish



Distinguishing characteristics

Deep bodied guitarfish with dorsal white spots. Thorny ridges over eyes and on central dorsal ridge. D1 & D2 large shark-like fins.
Listed as Vulnerable on the IUCN Red List.

13
Size

Born 45-51cm TL. Mature: 155-180cm TL. Maximum 300cm TL.

Vyolon

S.N. *Rhynchobatus australiae*

E.N. White-spotted guitarfish



Distinguishing characteristics

Large triangular head to pointed snout. White spots on pectoral fins. Ridges of spines on dorsal surface. Large shark like dorsal fins and short lower caudal fin.
Listed as Vulnerable on the IUCN Red List.

14

Size

Born approx 60cm TL. Mature: 150cm TL, Maximum approx. 310cm TL.

Lare boukle

S.N. *Urogymnus asperrimus*

E.N. Porcupine ray



Distinguishing characteristics

A large and heavy-bodied species with a nearly circular, plain-coloured pectoral fin disc covered dorsally with small sharp thorns.
Listed as Vulnerable on the IUCN Red List.

19

Size

Mature at approx. 100cm TL, maximum length 147cm. TL.

Lare brizan

S.N. *Taeniurops meyeri*

E.N. Round ribbontail ray



Distinguishing characteristics

A large stingray with a circular disc, no thorns, a black and grey mottled upper surface. Thick pectoral fin disc wider than it is long, with a smoothly rounded outer margin. The eyes are followed by larger spiracles. Listed as Vulnerable on the IUCN Red List.

18

Size

Mature at approx. 110cm TL, Max length 330cm TL.

Lare dore

S.N. *Aetomylaeus vespertilio*

E.N. Ornate eagle ray



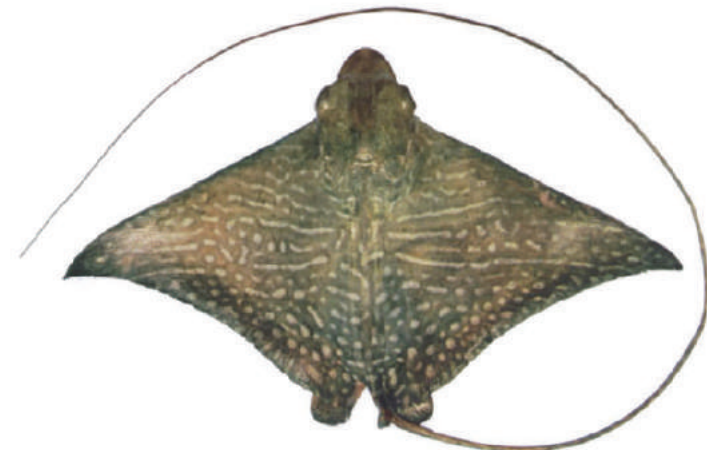
Distinguishing characteristics

Clear, distinct pattern of reticulate dark lines and rings on its back. Lacks a spine on the tail. Listed as Endangered on the IUCN Red List.

Size

Max length 240cm TL (Some reports of 400cm). If the extremely long tail is unbroken, it can considerably add to the maximum body length.

The endangered *Aetomylaeus maculata* may also occur.



Lare banann

S.N. *Himantura fai*

E.N. Pink whipray



Distinguishing characteristics

Uniformly tan to brownish pink dorsally. Diamond-shaped pectoral fin disc wider than long, with a broad-angled snout and a very long, whip-like tail without fin folds.
Listed as Vulnerable on the IUCN Red List.

Size⁶

Mature at 115cm, max length 183cm TL.

Dyab

S.N. *Manta alfredi*

E.N. Reef manta ray



The similar *Manta birostris* (Giant Oceanic Manta Ray) may also occur.

Distinguishing characteristics

Ventral spots are located near the posterior end and between the gill slits, small, knob-like dermal denticles evenly distributed on both the dorsal and ventral surfaces.
slender whip-like tail approximately 123% of disc length if intact.
Listed as Vulnerable on the IUCN Red List.

Size⁷

Maturity range 370 - 390 cm. Max length : 500 cm
Disc approximately 2.2-2.4 times as broad as it is long, the maximum disc width size approximately 550 cm